

**POWERMATIC®**

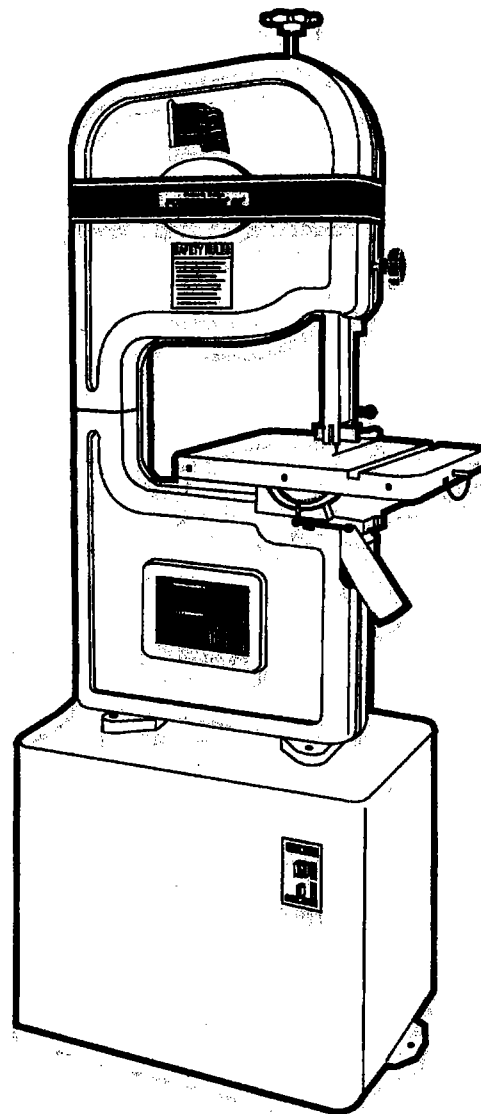
MODEL

**141**

**14" BAND SAW**

**OPERATING INSTRUCTIONS  
AND  
PARTS LIST**

**Price \$2.50**



**POWERMATIC**  **HOUDAILLE**  
McMinnville, Tennessee 37110

2006

## Operating and Safety Instructions

1. Be sure the machine frame is electrically grounded.
2. Remove or fasten loose articles of clothing such as necktie, sleeves, coat and confine long hair.
3. Remove jewelry such as finger rings, watches and bracelets.
4. Use a safety face shield, goggles or glasses to protect eyes.
5. Keep the floor around the machine clean and free from scraps, sawdust, oil or grease to minimize the danger of slipping.
6. Before starting the band saw:
  - a. Clear table area of tools, chips and all foreign matter.
  - b. Check the band saw blade for general condition, sharpness, proper set and make sure it is the right blade for the work to be done. Missing teeth, a peeled back, dullness place a severe strain on the blade and can cause the blade to break.
  - c. Rotate the band wheel by hand to make certain the blade tracks properly.
  - d. Check blade tension. Make sure it is set for the blade width to be used. Excessive tension can cause the blade to fatigue and break.
  - e. Set the upper guide as close to the work height as possible to insure the maximum blade rigidity.
  - f. Make sure the trunnion, guide bar and guides are securely locked.
7. Make sure, under power, that the band wheels rotate in the correct direction.
8. Use the correct speed and feed for the blade, blade material and work piece to be cut.
9. Do not clear chips from blade with the blade moving under power.
10. When manually feeding narrow parts, use a push stick or other piece of the same material to finish the cut.
11. When cutting with the table at an angle, be sure to block or clamp the work piece to prevent it or the cut off portion from falling off the table.
12. On long piece cutting, use out-board supports to prevent the work piece from becoming overbalanced and falling to the floor.
13. Do not overfeed--it will reduce blade life and can cause blade breakage.
14. Never operate the saw with either the upper or lower wheel door or with the blade guard open.
15. If the machine is equipped with a blade welder and grinder, follow the operating and safety instructions provided to insure welding with safety.
16. Give the work you're doing your undivided attention. Looking around, carrying on a conversation and "horse play" are careless acts that can result in serious injury.
17. If leaving the machine area, turn the machine off and wait until all moving parts stop before departing.
18. Make no adjustments except speed and feed changes with the hand rotating, and always disconnect power source when changing bands or servicing in order to avoid accidental starting.
19. Use only Powermatic or factory authorized replacement parts and accessories, otherwise the warranty and guarantee are null and void.
20. Do not use this Powermatic band saw for other than its intended use. If used for other purposes, Powermatic disclaims any real or implied warranty and holds itself harmless for any injury that may result from that use.

**WARNING:** Do not equip or use this machine with a motor larger than 3/4 horsepower at 1800 R.P.M. The use of a larger or higher speed motor voids the guarantee and Powermatic holds itself harmless from any injury that may result.

## OPERATING INSTRUCTIONS

The Powermatic Model 141-14" Band Saw is constructed of cast iron, braced to give maximum rigidity. Streamlined in appearance, all moving parts are completely guarded for safe operation. The top and bottom band saw wheels are easily accessible through large hinged doors on the front of saw. Separate, enclosed floor stand keeps motor and drive free from cuttings and dust.

**MOTOR AND WIRING:** Electric wiring is connected to motor wiring in switch box mounted in the base. Motor should be inspected and checked for rotation before operating machine. Operate lower unit and check rotation before installing blade.

**POWER DRIVE:** The saw is driven with a motor mounted in the base of the machine. A 1/3 HP motor is sufficient for light and medium work and a 1/2 HP for heavy work and resawing. The motor is mounted on an adjustable hinged base.

**INSTALLING BLADE:** To install band saw blade, remove taper pin from front of table; open the large hinged doors. Take the blade in both hands and slide through the table slot and over band saw wheels. With blade placed in the center of the band wheels, increase tension with tension screw (1) fig. 1. Set upper and lower saw guides so that they will clear the saw blade. Turn the band wheels by hand to see that saw blade tracks properly. If blade runs to the front of the band wheel, handwheel (2) fig. 1 should be turned to the right or clockwise until blade runs to center of wheel. If blade runs to the back, turn handwheel (2) fig. 1 to left or counter-clockwise. For accurate work and maximum blade life it is important that the blade runs centered on the wheels. When the adjustment has been properly made, the blade will track; that is, it will run steadily in the same line.

**WHEEL ALIGNMENT:** The band wheels are properly aligned at the factory, and should operate properly. However, in shipping, the original adjustment may have moved, necessitating re-alignment. The lower wheel housing should be adjusted by shimming. Upper wheels are mounted on a pivot and can be positioned by turning set screw (7) fig. 2 to the left or right.

**BLADE GUIDE ADJUSTMENT:** For proper operation, the saw blade must be supported by an upper and lower saw guide. The lower guide is mounted under the table and the upper guide is mounted on an adjustable bar above the table. The purpose of the band saw guide is to support the blade in cutting circles. It is very important that the guides be set in proper relation to the saw blade. To set the guides to the saw blade, set the tension on the blade and start the saw to check tracking. Set the upper guide as follows: Loosen set screw on the guide blocks (8) fig. 2 and move the blocks until both upper and lower guides clear the blade. Loosen wingnut (5) fig. 2 and move guide holder until the guide edge is just back of the gullet in the saw blade. Loosen wing screw (4) fig. 2 and adjust backup bearing (6) by turning screw (10) fig. 2 until bearing (6) clears the back of the blade 1/64" when band wheel is turned by hand. To adjust side blocks to blade, set the right hand guide block until it just clears the blade and fasten in place with screw (8). Place a thin piece of paper (9) around saw band and push left hand guide block against saw band. Tighten saw guide block. Repeat this process in setting lower guide. The thin paper strip guarantees proper clearance of blade between guides.

**BLADE TENSION:** Correct blade tension is very important for efficient operation. The wider and thicker blades require more tension than narrow blades. Blades too tight or too loose increase blade fatigue, greatly reducing the life expectancy of the blade.

**TABLE ADJUSTMENTS:** The table is mounted on heavy duty trunnions that rest on trunion base (4) fig. 3. The table can be tilted 45 degrees to the right and 12 degrees to the left. Table is locked in position with trunion locks (5) fig. 3. To level table with blade, raise blade guide as high as possible and place machinist square against side of blade. Set table stop on the back of table by adjusting screw on top of the stop, (6) fig. 3. The stop bar may be removed for tilting table to the left.

**LUBRICATION:** The bearings on the top and bottom shaft are sealed for life, requiring no lubrication. The slides and adjusting screws should be lubricated at regular intervals with a light weight oil to insure proper operation.

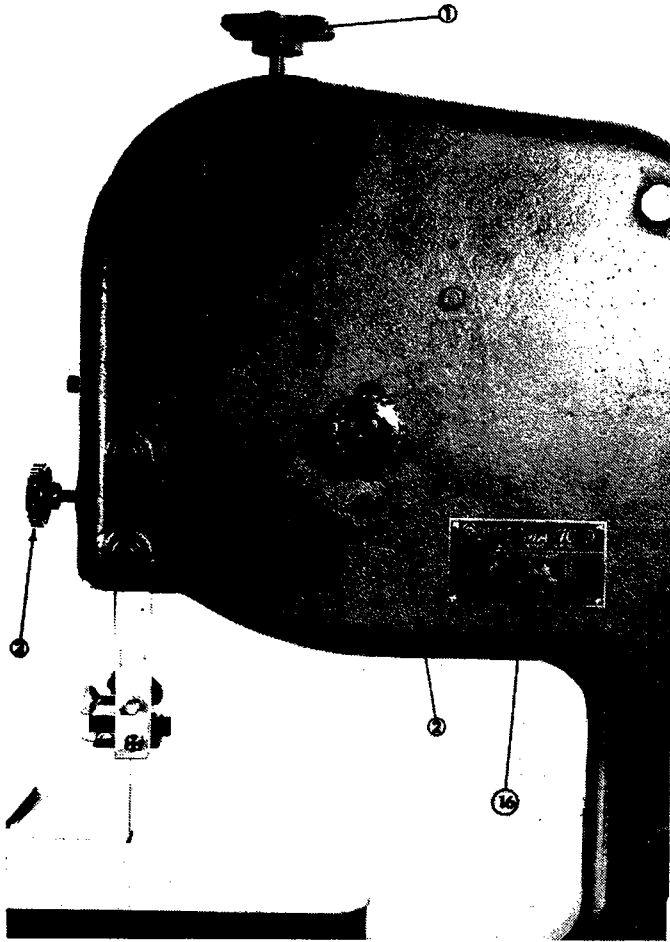


FIGURE 1

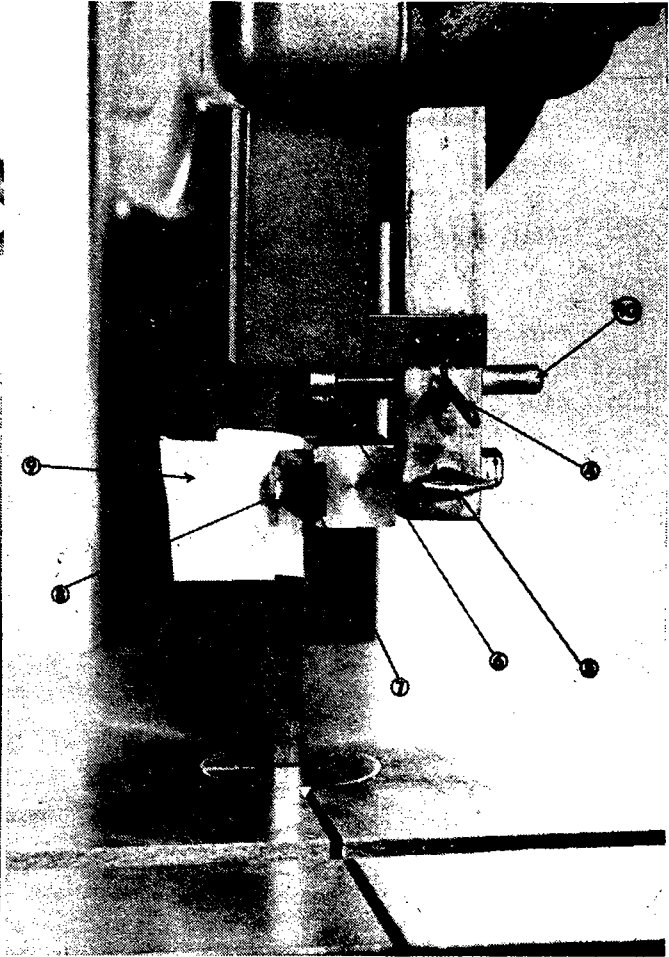


FIGURE 2

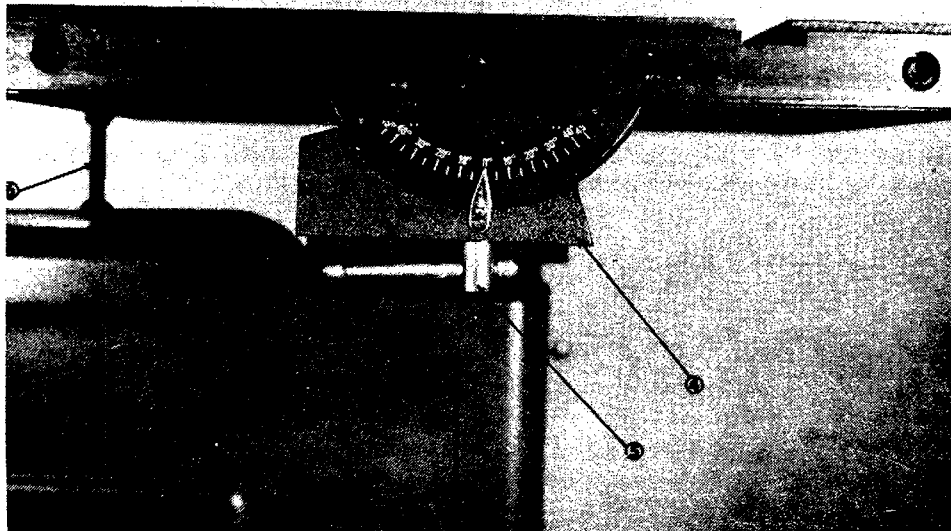
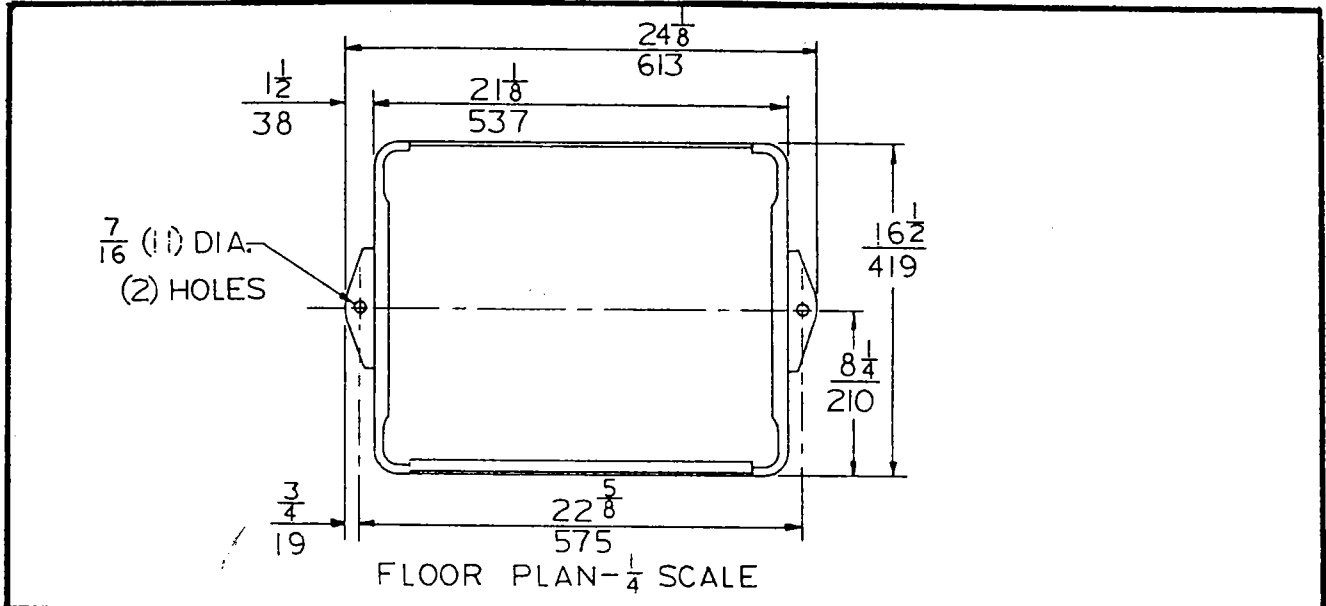


FIGURE 3

**MODEL 141 BAND SAW - DIMENSIONAL DRAWING**



NOTE: LOWER DIMENSIONS IN MILLIMETERS

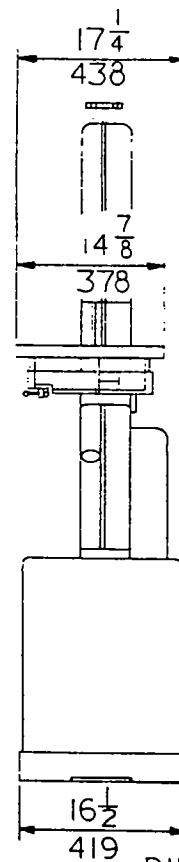
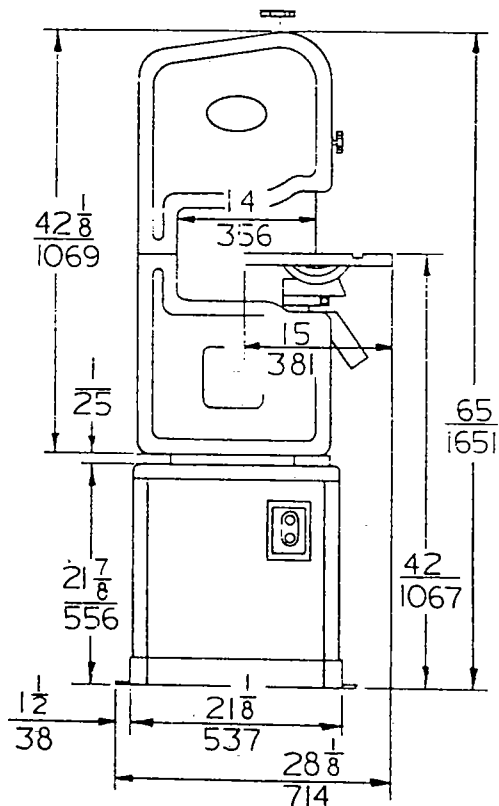
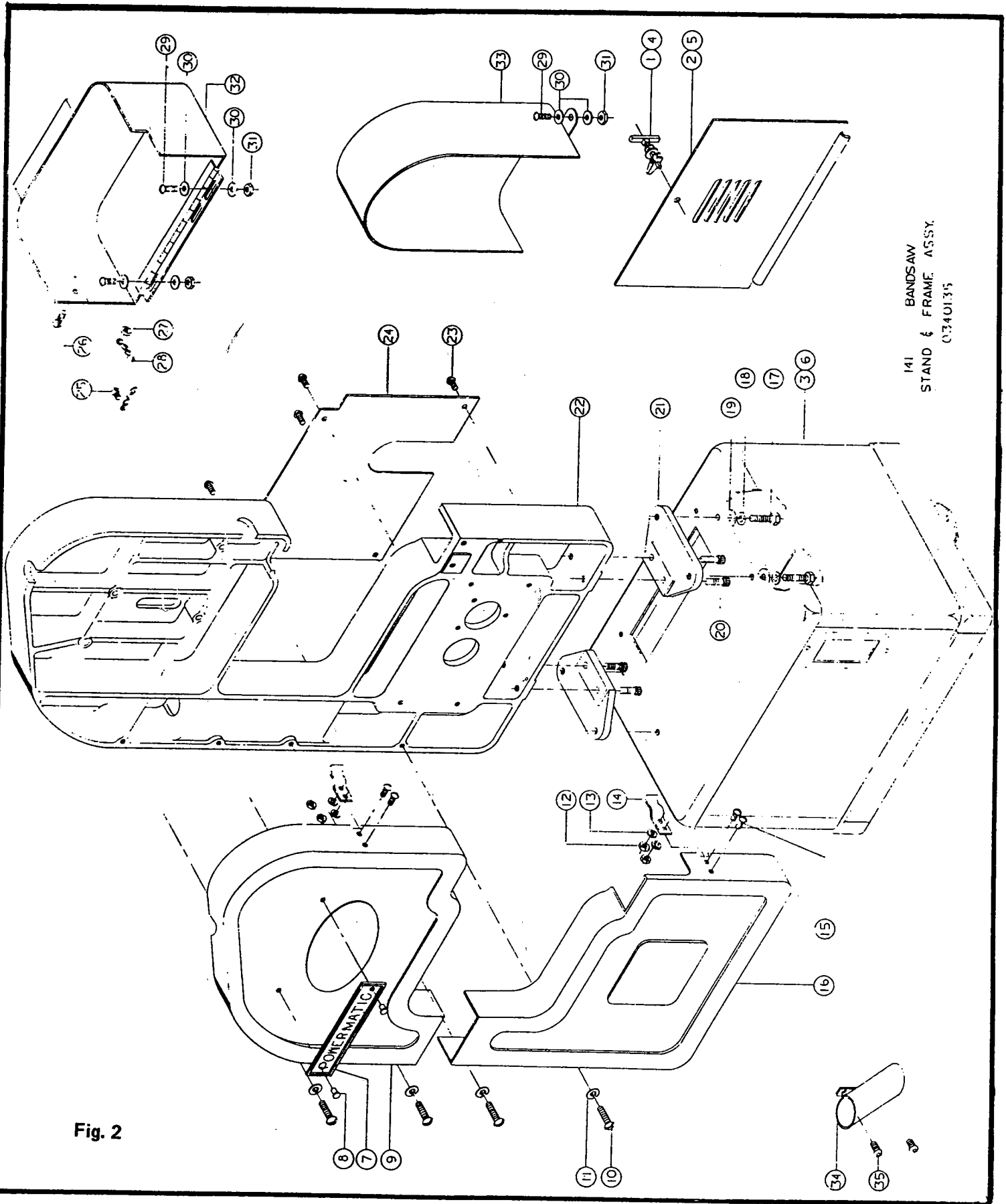


Fig. 1

141 B.S.  
DIMENSIONAL DWG.  
014 005 6

**MODEL 141 BAND SAW - STAND & FRAME ASSEMBLY**



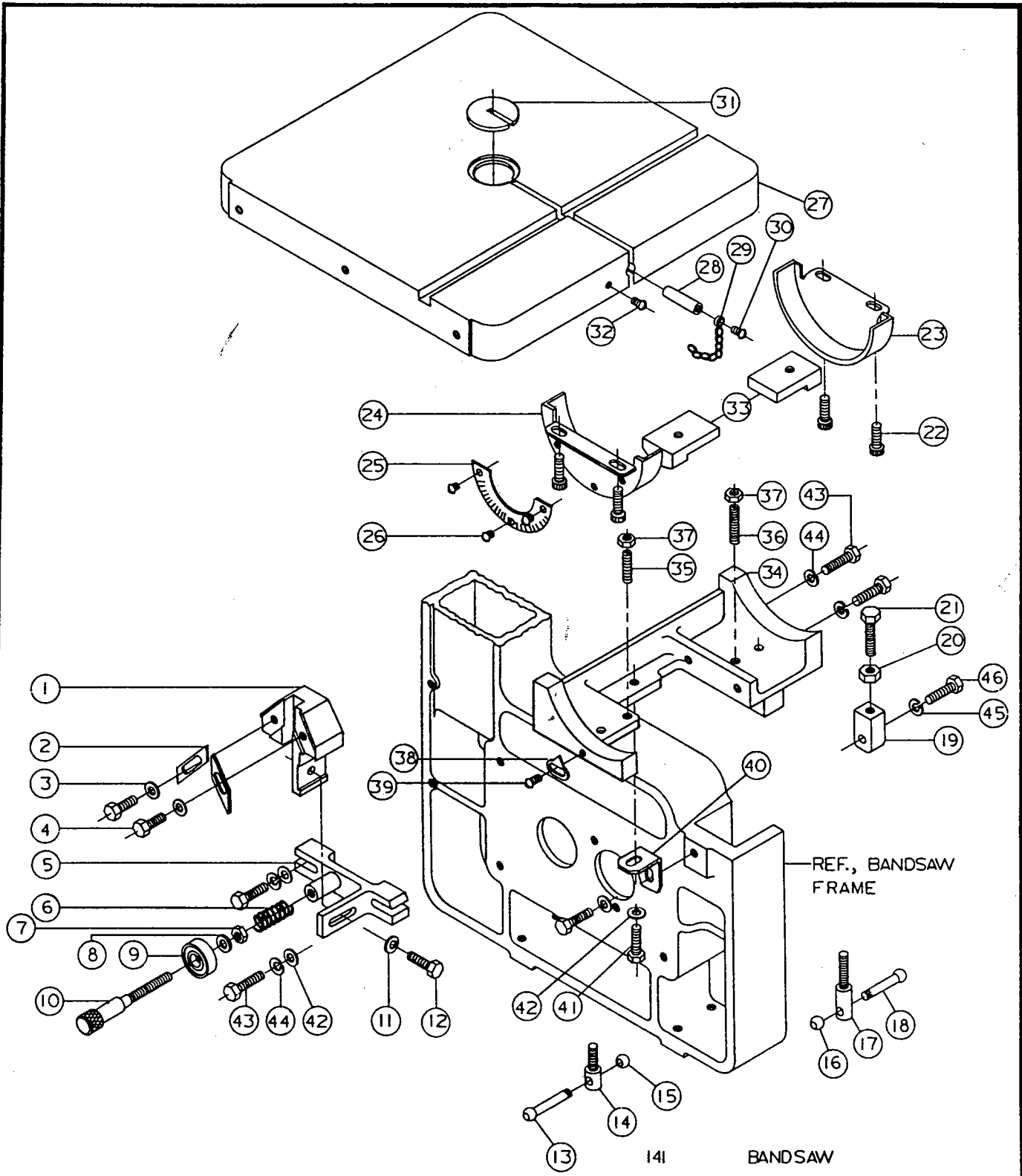
141 BANDSAW  
STAND & FRAME ASSY.  
C34U135

Fig. 2

MODEL 141 BAND SAW - STAND & FRAME ASSEMBLY

ITEM NO.	PART NO.	DESCRIPTION	QTY.
	2759013	STAND ASSEMBLY, 141 B.S. (ITEMS 1 THRU 3)	
	2136012	DOOR ASSEMBLY, (ITEMS 1 & 2)	
1	6440002	LATCH, CABINET "T" HANDLE, 61-30-4-0	1
2	3136003	DOOR, UNIVERSAL	1
3	2759031	STAND ASSY., (WELDMENT)	1
7	3312252	PLATE, I.D., POWERMATIC	1
8	6680020	RIVET, 5/32 X 1/4"	2
9	2136020	DOOR ASSY., UPPER	1
10	6715055	SCR., RD. HD., 5/16-18 X 1/2"	4
11	6861200	WASHER, LOCK, 5/16"	4
12	6506001	NUT, HEX, 6-32	4
13	6860601	WASHER, LOCK, No. 6	4
14	3420003	LATCH, DOOR	2
15	6706036	SCR., RD. HD. MACH., 6-32 X 3/8"	4
16	2136021	DOOR ASSY., LOWER	1
17	6716039	SCR., HEX HD. CAP, 3/8-16 X 1-1/4"	4
18	6861300	WASHER, LOCK, 3/8"	4
19	6861301	WASHER, FLAT, 3/8"	4
20	6715021	SCR., SOC. HD. CAP, 5/16-18 X 1-1/4"	4
21	3423008	LEG, FRAME	2
22	3218006	FRAME, SAW	1
23	6714063	SCR., RD. HD. MACH., 1/4-20 X 1/2"	4
24	3595029	PLATE, COVER	1
29	6714062	SCR., RD. HD., 1/4-20 X 5/8"	2
30	6861101	WASHER, FLAT, 1/4"	4
31	6514011	NUT, HEX JAM, 1/4-20	2
33	2104008	COVER, LOWER DRIVE ASSY. (WELDMENT)	1
34	2063061	EXHAUST, PIPE ASSEMBLY (WELDMENT)	1
35	6710062	SCR., BUTTON HD., 10-24 X 3/8"	2

MODEL 141 BAND SAW - TRUNNION & TABLE ASSEMBLY



141 BANDSAW  
TRUNNION & TABLE ASSY.  
0340136

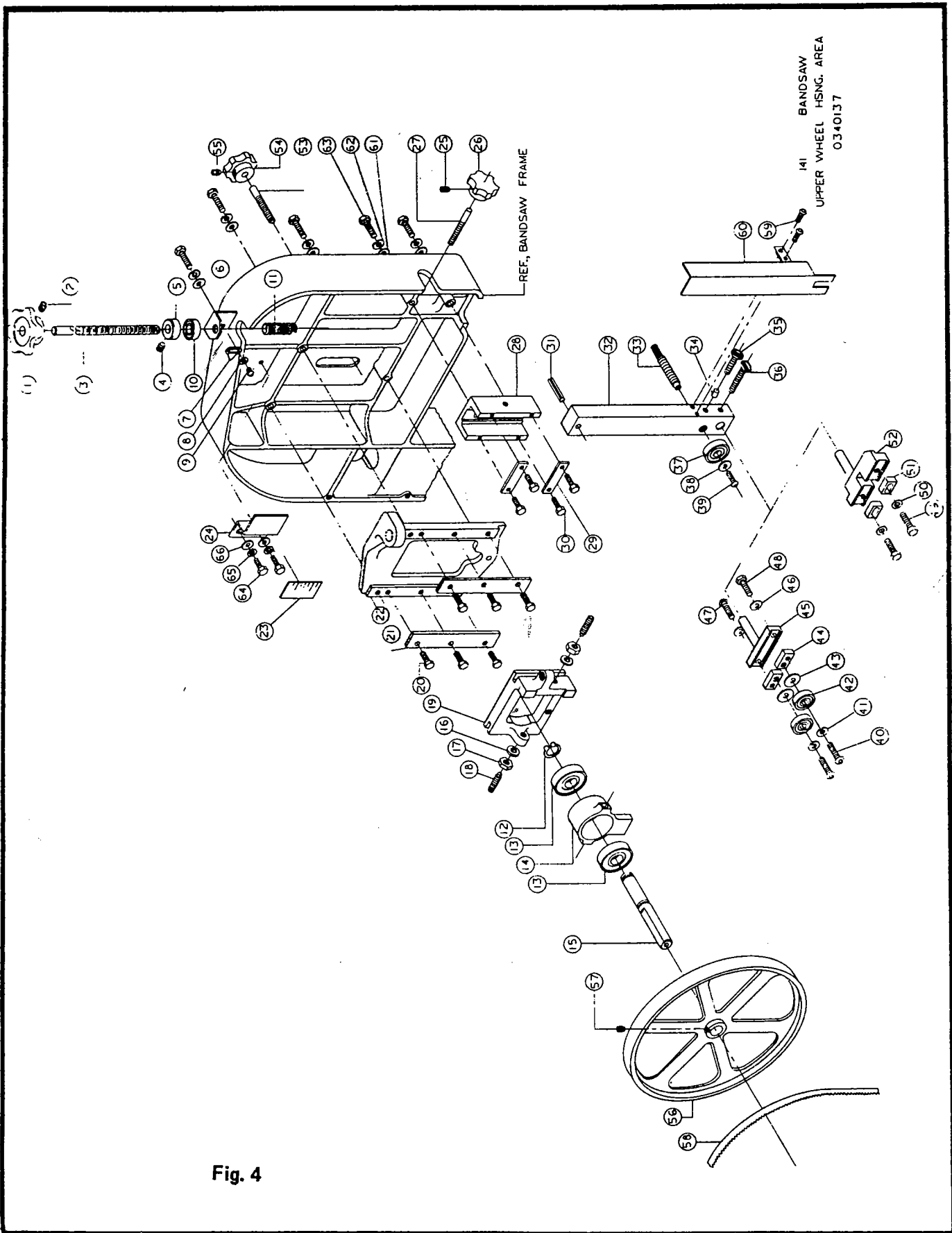
Fig. 3



**MODEL 141 BAND SAW – TRUNNION & TABLE ASSEMBLY**

ITEM NO.	PART NO.	DESCRIPTION	QTY.	ITEM NO.	PART NO.	DESCRIPTION	QTY.
	2253040	GUIDE ASSEMBLY, LOWER (ITEMS 1 THRU 12)		38	3604004	POINTER, TRUNNION	1
1	3253016	GUIDE, LOWER, HOLDER	1	39	6706035	SCR., RD. HD. MACH., 6-32 X 1/4"	1
2	3328004	INSERT, GUIDE	2	40	3094013	CLIP, TRUNNION BRACKET SUPPORT	1
3	6861107	WASHER, FLAT, 1/4, 5/8" O.D.	2	41	6715033	SCR., HEX HD. CAP, 5/16-18 X 1/2"	2
4	6714049	SCR., HEX HD. CAP, 1/4-20 X 3/4"	2	42	6861201	WASHER, FLAT, 1/2"	4
5	3063007	BRACKET, LOWER GUIDE MOUNTING	1	43	6715034	SCR., HEX HD. CAP, 5/16-18 X 1-1/4"	4
6	6813063	SPRING, DUDEK & BOCK, No. 143	1	44	6861200	WASHER, LOCK, 5/16"	4
7	6516002	NUT, HEX JAM, 3/8-16	1	45	6861300	WASHER, LOCK, 3/8"	1
8	6861309	WASHER, FLAT, 3/8" (PLATED)	1	46	6716039	SCR., HEX HD. CAP, 3/8-16 X 1-1/4"	1
9	6060002	BEARING, FAFNIR No. 200PP	1				
10	3702002	SHAFT, LOWER BACKUP BEARING	1				
11	6861201	WASHER, FLAT, 5/16"	1				
12	6715035	SCR., HEX HD. CAP, 5/16-18 X 3/4"	1				
	2695023	SCREW LOCK ASSEMBLY SHORT (ITEMS 13 THRU 15)					
13	3268002	HANDLE, LOCK SCREW	1				
14	3695012	SCREW, LOCK, TRUNNION	1				
15	3406016	KNOB, HANDLE	1				
26	2695022	SCREW LOCK ASSEMBLY, LONG (ITEMS 16 THRU 18)					
16	3406016	KNOB, HANDLE	1				
17	3695013	SCREW, LOCK, TRUNNION	1				
18	3268002	HANDLE, LOCK SCREW	1				
	2063016	BRACKET ASSEMBLY, TABLE STOP (ITEMS 19 THRU 21)					
19	3064038	BRACKET, TABLE STOP	1				
20	6567001	NUT, HEX JAM, 7/16-20	1				
21	6767005	SCR., HEX HD. CAP, 7/16-20 X 1-3/4"	1				
	2797021	TABLE ASSEMBLY (ITEMS 22 THRU 27)					
22	6715023	SCR., SOC. HD. CAP, 5/16-18 X 1/2"	4				
23	3810002	TRUNNION, W/O HOLES	1				
24	3810001	TRUNNION, W/HOLES	1				
25	3684202	SCALE, TILTING	1				
26	6747000	SCR., RD. HD. DRIVE, 4 X 3/16" LG.	3				
27	3797048	TABLE	1				
	2590001	PIN ASSEMBLY, TAPER (ITEMS 28 THRU 30)					
28	3582011	PIN, TAPER	1				
29	3083020	CHAIN, No. OO SAFETY X 5" LG.	1				
30	6707079	SCR., RD. HD., 6-32 X 1/4"	1				
31	3328203	INSERT, TABLE	1				
32	6706036	SCR., RD. HD. MACH., 6-32 X 3/8"	1				
33	3032013	CLAMP, TRUNNION	2				
34	3063060	BRACKET, TRUNNION MTG.	1				
35	6716126	SCR., SET, 3/8-16 X 1-1/4" CUP PT., SLOTTED (LEFT)	1				
36	6716127	SCR., SLOTTED HEADLESS SET, 3/8-16 X 2" CUP PT.	1				
37	6516009	NUT, HEX JAM, 3/8-16	2				

MODEL 141 BAND SAW - UPPER WHEEL HOUSING AREA ASSEMBLY



MODEL 141 BAND SAW - UPPER WHEEL HOUSING AREA ASSEMBLY

ITEM NO.	PART NO.	DESCRIPTION	QTY.	ITEM NO.	PART NO.	DESCRIPTION	QTY.
	2298006	UPPER WHEEL HOUSING ASSY. (ITEMS 1 THRU 22)			2850004	UPPER WHEEL TILTING ASSEMBLY (ITEMS 53 THRU 55)	
	2690018	SCREW ASS., TENSION ADJUSTING (ITEMS 1 THRU 11)		53	3695025	SCREW, TILTING	1
1	3271008	HANDWHEEL, 3-1/2" DIA.	1	54	3406018	KNOB	1
2	6715016	SCR., SOC. SET, CUP PT., 5/16-18 X 1/4	1	55	6714004	SCR., SOC. SET, CUP PT., 1/4-20 X 1/4"	1
3	3690030	SCREW, TENSION ADJUSTING	1	56	2850008	WHEEL ASSEMBLY, UPPER & LOWER	2
4	6715015	SCR., SOC. SET, CUP PT., 5/16-18 X 1/4	1	57	6715011	SCR., SOC. SET, CUP PT., 5/16-18 X 3/8"	1
5	3096202	COLLAR	1	58	6080000	BLADE, BANDSAW, 1/8" W X 96" L, WOOD	1
6	3094011	CLIP, SPRING	1	6080001	BLADE, BANDSAW, 3/16" W X 96" L, WOOD	1	
7	3604004	POINTER	1	6080002	BLADE, BANDSAW, 1/4" W X 96" L, WOOD		
8	6860600	WASHER, FLAT, No. 6	1	6080003	BLADE, BANDSAW, 3/8" W X 96" L, WOOD		
9	6706035	SCR., RD. HD., 6-32 X 1/4" (ZINC PLTD PLATED)	1	6080004	BLADE, BANDSAW, 1/2" W X 96" L, WOOD		
10	6065000	BEARING, THRUST, NICE No. 603-1/4	1	6080005	BLADE, BANDSAW, 3/4" W X 96" L, WOOD		
11	6813029	SPRING, No. 43	1	6080006	BLADE, BANDSAW, 1/8" W X 96" L, METAL		
	2709006	SHAFT ASSEMBLY, UPPER WHEEL (ITEMS 12 THRU 15)		6080007	BLADE, BANDSAW, 3/16" W X 96" L, METAL		
12	6670001	RING, RETAINING, No. 5100-66	1	6080008	BLADE, BANDSAW, 1/4" W X 96" L, METAL		
13	6060051	BEARING, FAFNIR No. 203NPPG	2	6080009	BLADE, BANDSAW, 3/8" W X 96" L, METAL		
14	3298011	HOUSING, BEARING	1	6080010	BLADE, BANDSAW, 3/2" W X 96" L, METAL		
15	3707005	SHAFT, UPPER WHEEL	1	6080011	BLADE, BANDSAW, 3/4" W X 96" L, METAL		
16	6861500	WASHER, LOCK, 1/2"	2	6080012	BLADE, BANDSAW, 3/4" W X 96" L, 10 PITCH, METAL		
17	6518008	NUT, HEX JAM, 1/2-13	2	59	6714083	SCR., BUTTON HD. SOC. CAP, 1/4-20 X 1/2"	2
18	6718038	SCR., SOC. HD. HALF DOG PT., 1/2-13 X 1-1/4"	2	60	2250087	BLADE GUARD, ASSY. (WELDMENT)	1
19	3063040	BRACKET, UPPER BEARING HOUSING	1	61	6861301	WASHER, FLAT, 3/8"	5
20	6715033	SCR., HEX HD. CAP, 5/16-18 X 1/2"	6	62	6861300	WASHER, LOCK, 3/8"	5
21	3244003	GIB, SLIDE BRACKET	2	63	6716035	SCR., HEX HD. CAP, 3/8-16 X 1-3/4"	5
22	3063019	BRACKET, UPPER BEARING HOUSING MOUNTING	1	64	6715033	SCR., HEX HD. CAP, 5/16-18 X 1/2"	2
	2063018	TENSION BRACKET ASSEMBLY (ITEMS 23 & 24)		65	6861200	WASHER, LOCK, 5/16"	2
23	3684210	SCALE, PLATE	1	66	6861201	WASHER, FLAT, 5/16"	2
24	3064050	BRACKET, TENSION ADJUSTING	1				
	2040007	GUIDE BAR ASSY. (ITEMS 25 THRU 39)					
	2440006	LOCK, ASSEMBLY, GUIDE BAR (ITEMS 25 THRU 27)					
25	6714011	SCR., SOC. SET, CUP PT., 1/4-20 X 1/4"	1				
26	3406018	KNOB, 1000-8 X 3/8" (CHROME PLATED)	1				
27	3695023	SCR., GUIDE LOCKING BAR	1				
28	3288012	HOLDER, GUIDE BAR	1				
29	3481004	MOUNTING PLATE, GUIDE BAR HOLDER	2				
30	6715033	SCR., HEX HD. CAP, 5/16-18 X 1/2"	4				
31	6626042	PIN, SPRING, 1/4 X 7/8" LG.	1				
32	3044047	BAR, GUIDE	1				
33	3701021	SHAFT, UPPER GUIDE MOUNTING (BACKUP BEARING)	1				
34	3598021	PLUG, BRASS, 1/4"	1				
35	6715133	SCR., THUMB, 5/16-18 X 1" (ZINC PLATED)	1				
36	6715134	SCR., THUMB, 5/16-18 X 1-1/2" (ZINC PLATED)	1				
37	6060002	BEARING, FAFNIR, 200PP	1				
38	6861101	WASHER, FLAT, 1/4"	1				
39	6714082	SCR., BUTTON HD., SOC. CAP, 1/4-20 X 3/8"	1				
	2263060	GUIDE ASSEMBLY, UPPER BALL BEARING (ITEMS 40 THRU 48)					
40	6766022	SCR., BUTTON HD. SOC., 3/8-24 X 3/4" BLACKENED	2				
41	6861312	WASHER, LOCK, 3/8"	2				
42	6060002	BEARING, BALL, FAFNIR No. 200PP	2				
43	6811281	SPACER, GUIDE RETAINING, DE-STACO, 3/8 I.D. X 5/8 O.D. X 1/32"	2				
44	3481007	MOUNTING PLATE, BALL BEARING GUIDE	2				
45	3259010	HOLDER, UPPER BLADE GUIDE, BALL BEARING	1				
46	6861201	WASHER, FLAT, 5/16"	2				
47	6774028	SCR., BUTTON HD., 5/16-24 X 7/8" BLACKENED	1				
48	6765026	SCR., HEX HD., 5/16-24 X 7/8" BLACKENED	1				

MODEL 141 BAND SAW - DRIVE AREA

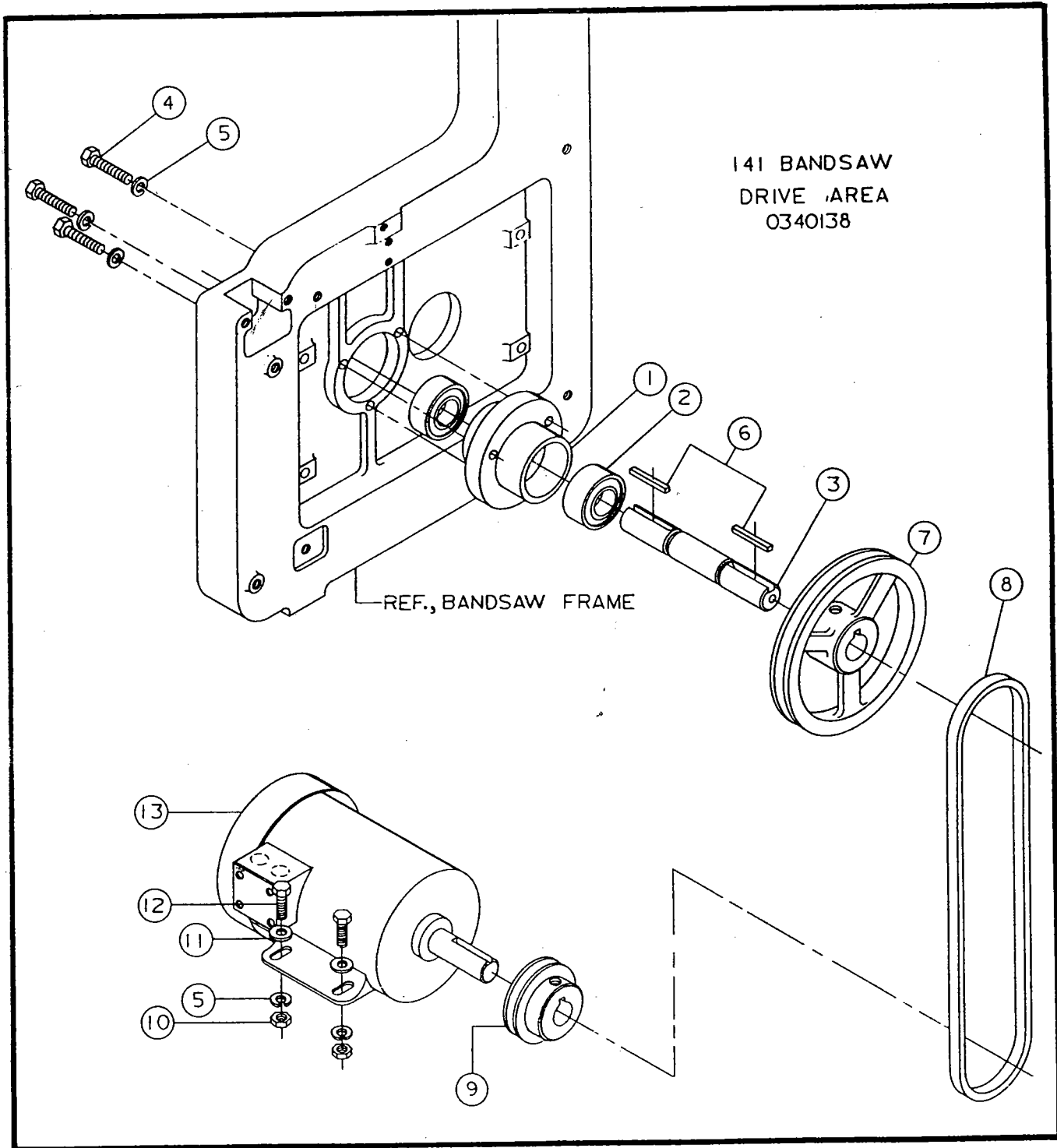
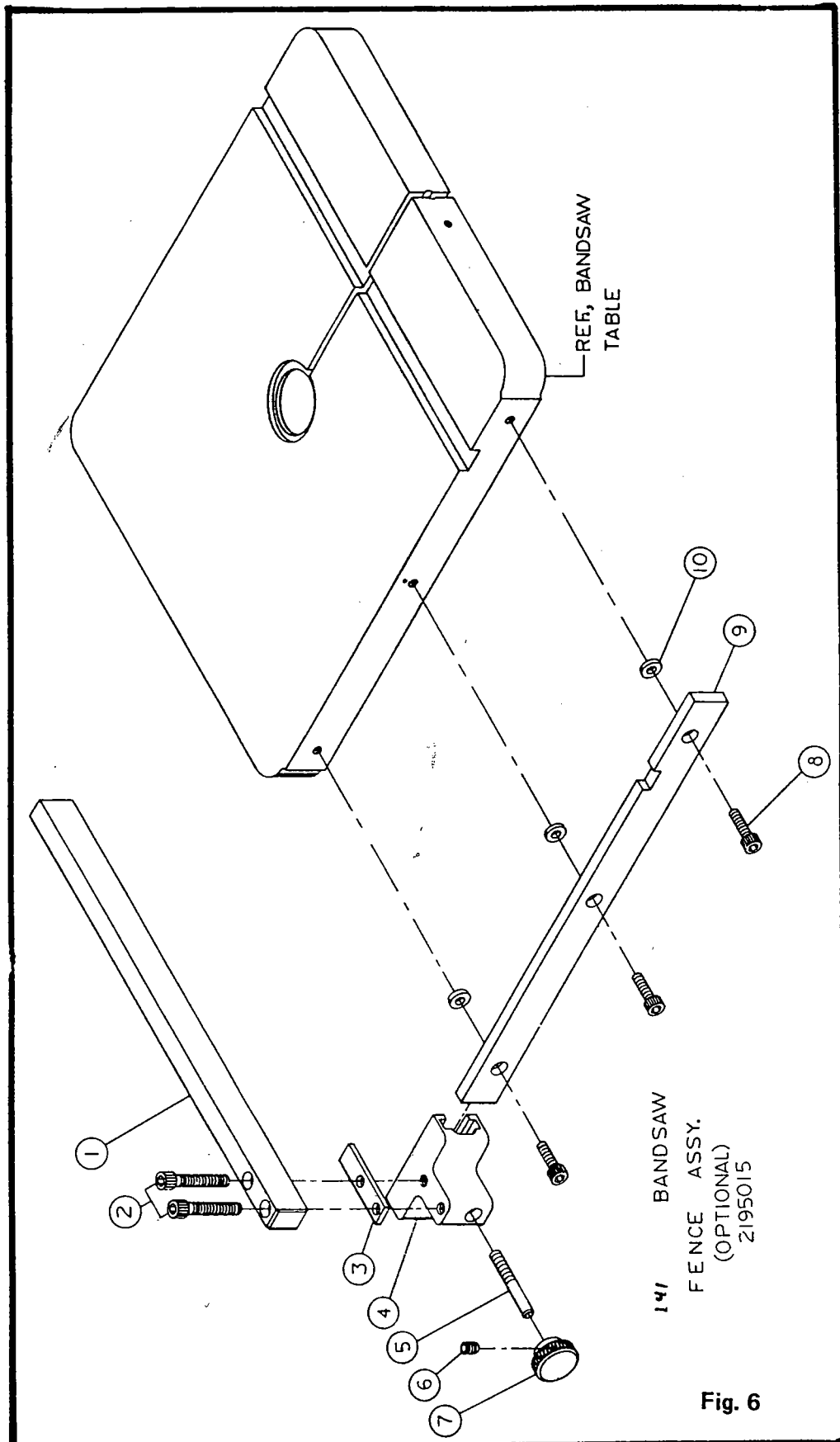


Fig. 5

MODEL 141 BAND SAW - DRIVE AREA

ITEM NO.	PART NO.	DESCRIPTION	QTY.
	2182003	LOWER DRIVE ASSEMBLY (ITEMS 1 THRU 3)	
1	3298040	HOUSING, BEARING	1
2	6060052	BEARING, MRC 204SZZG	2
3	3706006	SHAFT, LOWER WHEEL	1
4	6716032	SCR., HEX HD. CAP, 3/8-16 X 1-1/2"	3
5	6861300	WASHER, LOCK, 3/8"	7
6	3383004	KEY, LOWER WHEEL SHAFT, 3/16 X 3/16 X 1" LG.	2
7	6807045	SHEAVE, BROWNING AK-G4, 3/4" BORE	1
8	6077029	BELT, 4L-600V	1
9	6807031	SHEAVE, BROWNING, AK-30, 5/8" BORE	1
10	6516001	NUT, HEX, 3/8-16	4
11	6861301	WASHER, FLAT, 3/8"	4
12	6716039	SCR., HEX HD. CAP, 3/8-16 X 1-1/4"	4
13	6470700	MOTOR, ELEC. 3/4HP, 1PH, 1800RPM, 115/230V, 56 FFrame, TEFC	1
	6470702	MOTOR, ELEC., 3/4HP, 3PH, 1800RPM, 575V, 56 FRAME, TEFC	
	6470707	MOTOR, ELEC, 3/4HP, 3PH, 1800RPM, 230/460V, 56 FRAME, TEFC	
	6470712	MOTOR, ELEC., 3/4HP, 3PH, 1800RPM, 200V, 56 FRAME, TEFC	

MODEL 141 BAND SAW - FENCE ASSEMBLY  
(OPTIONAL)



MODEL 141 BAND SAW – FENCE ASSEMBLY

ITEM NO.	PART NO.	DESCRIPTION	QTY.
	2195015	FENCE ASSEMBLY, (COMPLETE)	
	2195005	FENCE ASSEMBLY (SUB) (ITEMS 1 THRU 7)	
1	3195005	FENCE, RIP	1
2	6715027	SCR., SOC. HD. CAP, 5/16-18 X 1-3/4"	2
3	3722003	SHIM, MTG. BRACKET & FENCE	1
4	3063044	BRACKET, MTG., RIP FENCE	1
5	3695024	SCREW, LOCK, MTG. BRACKET	1
6	6714004	SCR., SOC. SET, KNURLED CUP PT., 1/4-20 X 1/4"	1
7	3406005	KNOB	1
8	6715024	SCR., SOC. HD. CAP, 5/16-18 X 5/8"	3
9	3044044	BAR, FENCE	1
10	3735002	SPACER, BAR & TABLE	3

**MODEL 141 BAND SAW – MITER GAUGE ASSEMBLY  
(OPTIONAL)**

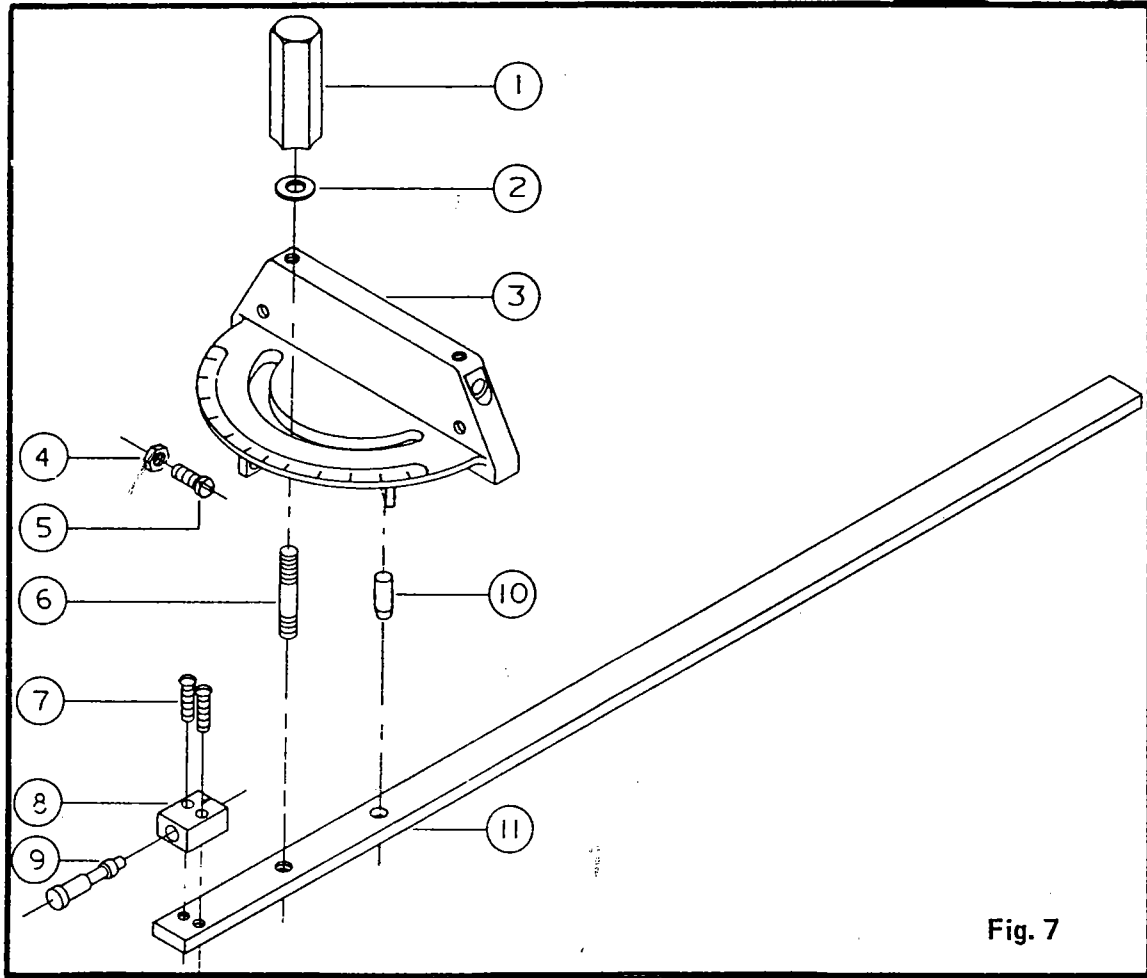


Fig. 7

**MODEL 141 BAND SAW – STOP ROD ASSEMBLY  
(OPTIONAL)**

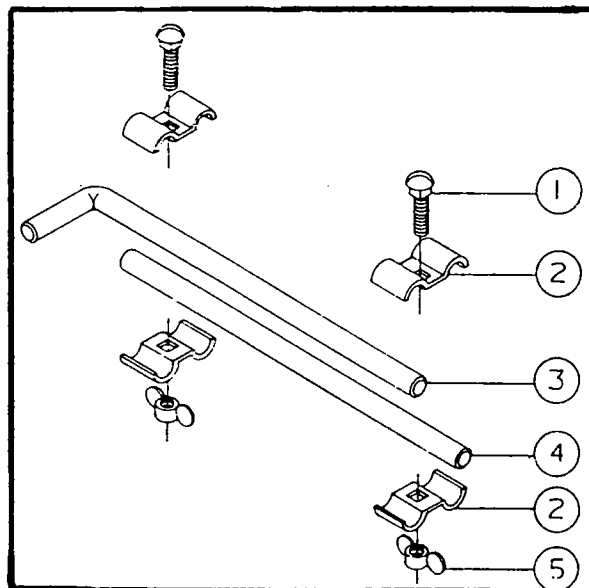


Fig. 8



**MODEL 141 BAND SAW – MITER GAUGE ASSEMBLY**

ITEM NO.	PART NO.	DESCRIPTION	QTY.
1	3268050	KNOB, MITER	1
2	6861101	WASHER, FLAT, 1/4"	1
3	3230007	GAUGE, MITER	1
4	6506003	NUT, HEX, No. 6-32 (PLATED)	3
5	6706094	SCR., RD. HD. MACH., No. 6-32 X 3/4"	3
6	3695220	SCREW, LOCK	1
7	6706041	SCR., RD. HD. MACH., 6-32 X 3/4"	2
8	3055101	BLOCK, POINTER	1
9	3582097	PIN, STOP	1
10	6623012	PIN, DOWEL, 1/4 X 1"	1
11	3044312	BAR, MITER, GAUGE	1

**MODEL 141 BAND SAW— STOP ROD ASSEMBLY**

ITEM NO.	PART NO.	DESCRIPTION	QTY.
1	6086000	BOLT, CARRIAGE, 10-24 X 3/4"	2
2	3092001	CLAMP	4
3	3670002	ROD, STOP (90° BEND)	1
4	3670003	ROD, STOP (STRAIGHT)	1
5	6510002	NUT, WING, 10-24 (ZINC PLATED)	1

## WARRANTY

### **Powermatic Corporation, 619 Morrison Street, McMinnville, Tennessee 37110**

("Powermatic") warrants to its authorized distributors of Powermatic products and the original purchasers from such distributors, all products manufactured by Powermatic to be free of defects in material and workmanship for a period of twelve (12) months from the date of delivery from its authorized distributors or 2000 hours of use, whichever occurs first. During said warranty period Powermatic will, at its option, repair or replace any product (or component part thereof) proving defective during said period. This warranty applies only to products which are used in accordance with all instructions as to operation, maintenance and safety set forth in the catalogs, manuals, and/or instruction sets furnished by Powermatic. This warranty becomes effective only if the accompanying card is fully and properly completed and returned to Powermatic within ten (10) days from date of delivery to the original purchaser.

This warranty does not apply to items that would normally be consumed or require replacement due to normal wear (blades, lubricants, etc.); to electrical motors and components which are warranted by their manufacturer; or the costs of removal, shipment for service and reinstallation. Claims relating to electrical components must be taken to the component manufacturer's local authorized repair station for service.

This warranty is null and void if the product has been subjected to (1) misuse, abuse or improper service or storage; (2) accident, neglect, damage or other circumstances beyond Powermatic's control; (3) modifications, disassembly tampering, alterations or repairs outside of Powermatic's factory not authorized by Powermatic; or to any product not bearing its original serial number plate. This warranty does not apply to normal wear and tear, corrosion, abrasion, or repairs required due to natural causes or acts of God.

To obtain the fastest possible warranty service you must first notify in writing the authorized Powermatic distributor from whom you purchased the product specifying (1) the product by catalog number and serial number, (2) the date the product was delivered to you, (3) a description of the problem for which you seek warranty service, and (4) evidence of proof of purchase. Should circumstances prohibit you contacting the distributor then contact the Powermatic factory directly. If your claim is covered by this warranty, your Powermatic distributor will provide you with instructions as to how and where service will be provided. On simple warranty replacement or repairs, installations instructions will be provided to allow correction by customer personnel. Powermatic assumes no responsibility for products which are returned without its prior written authorization. Powermatic's obligation under this warranty shall be exclusively limited to repairing or replacing (at Powermatic's option) products which are determined by Powermatic to be defective upon delivery, F.O.B. (return freight paid by customer) Powermatic's factory, and on inspection by Powermatic. In no event shall Powermatic's liability under this warranty exceed the purchase price paid for the product.

**THIS IS POWERMATIC'S SOLE WRITTEN WARRANTY. ANY AND ALL OTHER WARRANTIES WHICH MAY BE IMPLIED BY LAW, INCLUDING ANY WARRANTIES FOR MERCHANTABILITY OR FITNESS FOR A PARTICULAR PURPOSE, ARE HEREBY LIMITED TO THE DURATION OF THIS WRITTEN WARRANTY. POWERMATIC SHALL NOT BE LIABLE FOR ANY LOSS, DAMAGE, OR EXPENSE DIRECTLY OR INDIRECTLY RELATED TO THE USE OF ITS PRODUCTS OR FROM ANY OTHER CAUSE OR FOR CONSEQUENTIAL DAMAGES (INCLUDING WITHOUT LIMITATION, LOSS OF TIME, INCONVENIENCE, AND LOSS OF PRODUCTION). THE WARRANTY CONTAINED HEREIN MAY NOT BE MODIFIED AND NO OTHER WARRANTY, EXPRESSED OR IMPLIED, SHALL BE MADE BY OR ON BEHALF OF POWERMATIC.**



McMINNVILLE, TENNESSEE 37110

Phone No.: 800-248-0144

Fax No.: 931-473-7819

E-mail: [powermatic@worldnet.att.net](mailto:powermatic@worldnet.att.net)

Internet home page: <http://www.powermatic.com>